

coat + shoes. **Tory Burch**
top. **Dirty Pineapple**
bra. **Tableaux Vivants**
skirt + trousers. **HYKE**
skirt bib. **Carolina Sarria**
tights. **Wolford**
earrings. **Dinosaur Designs + Laruicci**
left hand rings. **Monica Varela + Jill Herlands**
right hand rings. **French Kande**
bracelet. **Sterling King**



opposite
Brooke wears
coat. **3.1 Phillip Lim**
top. **Tory Burch**
earrings throughout. **Screaming Mimis Vintage**

Lily wears
jacket + skirt. **Thom Browne**
top. **Saku**
gloves. **Scarlet Sage**



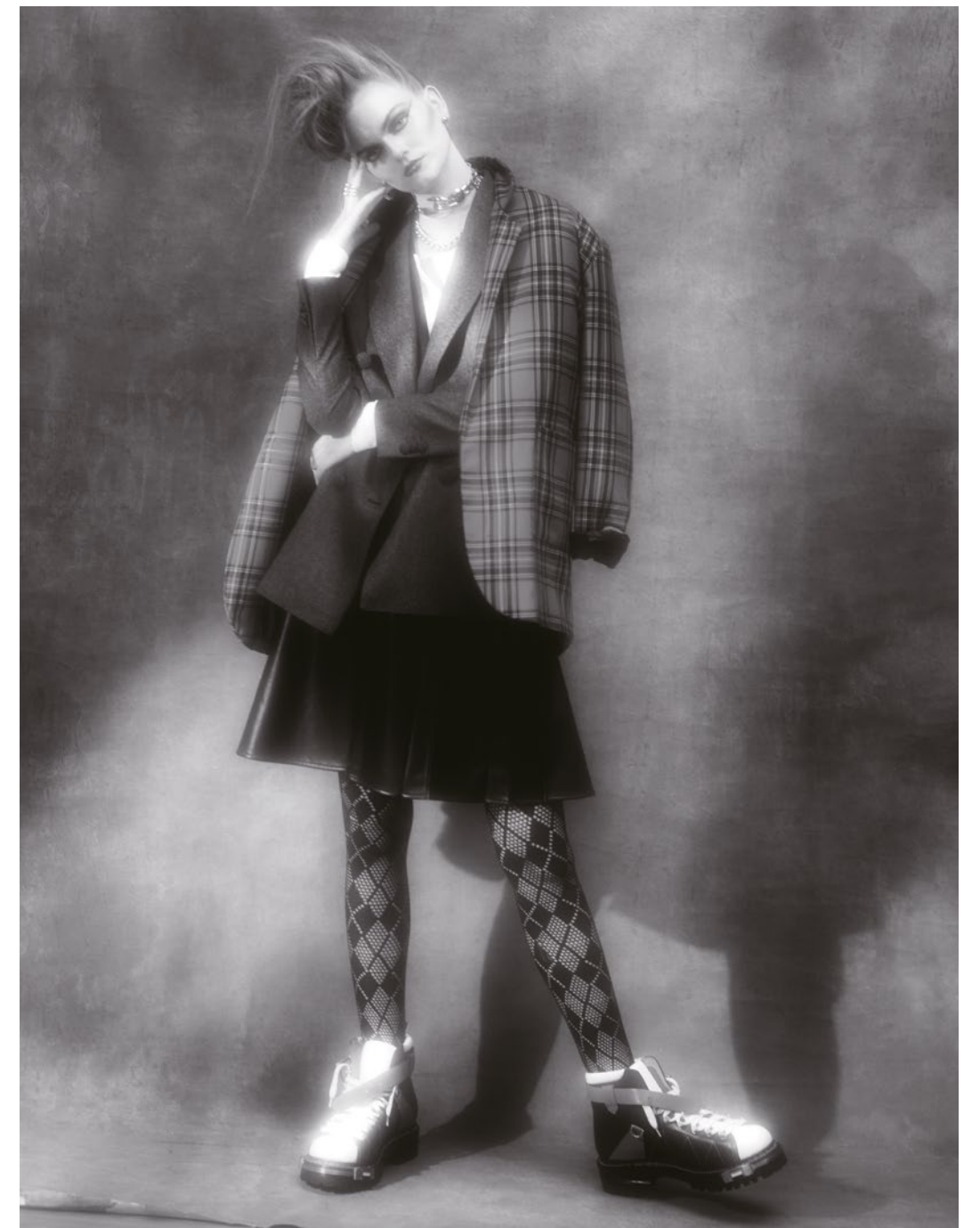
the new ten-ants

photography. **go minami**
fashion. **anthony pedraza**



bra. **Tableaux Vivants**
tights. **Emilio Cavallini**
gloves. **Scarlet Sage**

jacket. **Carolina Sarria**
jacket underneath. **Officine Generale**
top. **Nili Lotan**
shirt. T by **Alexander Wang**
skirt. **Adeam**
tights. **Emilio Cavallini**
shoes. **Thom Browne**
earrings. **Dinosaur Designs + Laruicci**
choker. **Dirty Pineapple x ChrisHabana**
necklace. **Ben-Amun**
rings. **Monica Varela + Jill Herlands**





left
coat. **Necessity Sense**
suit + shoes. **Thom Browne**
top. **Tory Burch**
bib. **Tableaux Vivants**
gloves. **Scarlet Sage**



right
coat. **Cushnie**
jacket. **Belstaff**
gloves. **Tableaux Vivants**



coat + skirt. **Moncler**
bodysuit. **Maison Close**
shoes. **Sacai**
gloves. **Tableaux Vivants**



jumpsuit. **Taylor Goldenberg**
necklace. **Dirty Pineapple x Chris Habana**

opposite
Lily wears
suit. **Beaufille**
jumpsuit. **Carolina Sarria**
shoes. **Sacai**
gloves. **Scarlet Sage**
earrings. **Dinosaur Designs + LaRuicci**
necklaces. **Ben Amun**
ring. **French Kande**

Brooke wears
shirt. **Wan Hung**
jumpsuit. **Jiayue Ge**
cuff. **Zana Bayne**



photography. **Go Minami**
fashion. **Anthony Pedraza**
models. **Brooke Gabel @ Elite NYC**
+ **Lily Chapman @ Wilhelmina**
hair. **Taichi Saito**

make up. **Ayana Awata using MAC Cosmetics**
fashion assistants. **Christian Negron + Jye Leong**
hair assistant. **Toshifumi Kakiuchi**